

The Hotels

Accommodations in locations on Sisi's Road

Travel destinations on Sisi's Road

In Bavaria, Austria, Hungary, Italy, on Corfu and in Switzerland

Hotel recommendations on Sisi's Road

The following hotels are partners: They welcome guests at the various locations connected with the history of the beautiful lady from Wittelsbach.

Bavaria



Golfhotel Kaiserin Elisabeth
Tutzingener Straße 2
D-82340 Feldafing
Tel.: +49 8157 9309-0
www.kaiserin-elisabeth.de

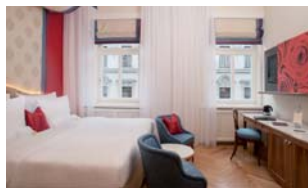


Hotel Am Rathaus
Am Hinteren Perlachberg 1
D-86150 Augsburg
Tel.: +49 821 346490
www.hotel-am-rathaus-augsburg.de

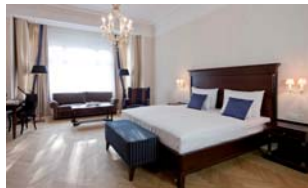
Austria



Hotel Goldenes Schiff
Adalbert-Stifter-Kai 3
A-4820 Bad Ischl
Tel.: +43 6132 24241
www.goldenes-schiff.at



HOTEL KAISERHOF WIEN
Frankenberggasse 10
A-1040 Wien
Tel.: +43 150 51701
www.hotel-kaiserhof.at/wien



AUSTRIA TREND HOTELS
PARKHOTEL SCHÖNBRUNN
Hietzinger Hauptstraße 10-14
A-1130 Wien
Tel.: +43 187 804605
www.austria-trend.at

Hungary



Hotel Sissi
Angyal utca 31
H-1094 Budapest
Tel.: +36 121 50082
www.hotelsissi.hu

Italy



Hotel Adria Meran
Hermann-Gilmweg 2
I-39012 Meran (Südtirol)
Tel.: +39 0473 236610
www.hotel-adria.com



Grand Hotel Imperial
Levico Terme
Via Silva Domini 1
I-38056 Levico Terme (Trento)
Tel.: +39 0461 700512
www.hotel-imperial-levico.com

Switzerland



Hotel Beau-Rivage
13, quai du Mont-Blanc
CH-1201 Genf
Tel.: +41 2271 66666
www.beau-rivage.ch



Hotel Masson, Montreux Riviera
5, rue Bonivard
CH-1820 Veytaux-Montreux
Tel.: +41 21 966 00 44
www.hotelmasson.ch

Elisabeth's footsteps in six European countries

A path from old Bavaria through Austria and as far as Hungary, from the Adriatic Sea all the way to Lake Geneva, the Sisi Route leads to magnificent places where Elisabeth the Empress of Austria and Queen of Hungary lived and traveled. Following the footsteps of the beautiful lady from Wittelsbach guides travelers to experience these destinations:

Bavaria

City of Aichach
Stadtplatz 48
D-86551 Aichach
Tel.: +49 8251 902-0
www.aichach.de
Route and Contact Sisi Castle:
Klausenweg 1
86551 Aichach
Tel.: +49 8251 891869

Tourist Information Starnberg
Hauptstraße 1
D-82319 Starnberg
Tel.: +49 8151 9060-0
www.sta5.de

Empress Elisabeth Museum
Possenhofen e.V.
In the Possenhofen
Central Train Station
Schlossberg 2, D-82343 Pöcking
Tel.: +49 8157 925932
www.kaiserin-elisabeth-museum-ev.de

Austria

Imperial Villa Bad Ischl
Jainzen 38
A-4820 Bad Ischl
Tel.: +43 6132 23241
www.kaiservilla.com

Tourism Association Bad Ischl
Auböckplatz 5, A-4820 Bad Ischl
Tel.: +43 6132 27757
www.badischl.at

City Museum Bad Ischl
Esplanade 10
A-4820 Bad Ischl
Tel.: +43 6132 25476
www.stadtmuseum.at

Schönbrunn Castle
A-1130 Wien
Tel.: +43 1 81113-0
www.schoenbrunn.at

Schönbrunn Zoo
Maxingstraße 13b
A-1130 Wien
Tel.: +43 1 8779294-0
www.zoovienna.at

Imperial Furniture
Collection-Furniture Museum
Andreasgasse 7
A-1070 Wien
Tel.: +43 1 5243357
www.hofmobiliendepot.at

Sisi Museum & Imperial Apartments & Silver Collections
Michaelerkuppel
A-1010 Wien
Tel.: +43 1 5337570
www.hofburg-wien.at

Laxenburg Castle
Betriebsgesellschaft m.b.H.
Schlossplatz 1
A-2361 Laxenburg
Tel.: +43 2236 71226-0
www.schloss-laxenburg.at

Esterházy Castle
Esterházyplatz 1
A-7000 Eisenstadt
TTel.: +43 2682 63004-7600
www.esterhazy.at

Hungary

Royal Castle Gödöllő
Postfach 406
H-2100 Gödöllő
Tel.: +36 28410-124
www.kiralyikastely.hu

Lazár Equestrian Park
H-2182 Domonyvölgy
Tel.: +36 28 576-510
www.lazarteam.hu

Herend AG
Porcelain Manufacturer
Kossuth L.u. 140
H-8440 Herend
Tel.: +36 88 523-100
www.herend.com

Italy

The Gardens at Trauttmansdorff Castle
St.-Valentin-Straße 51a
I-39012 Meran
Tel.: +39 0473 255600
www.trauttmansdorff.it

Miramare Castle
Viale Miramare
I-34151 Triest
Tel.: +39 040 224143
www.castello-miramare.it

Tourism Agency
Friuli Venezia Giulia
Via dell'Orologio 1
I-34121 Trieste
Tel.: +39 040 3478312
www.comune.trieste.it

Promo Trieste
Molo dei Bersaglieri, 3
I-34124 Trieste
Tel.: +39 040 304888
www.promotrieste.it

Correr Museum
Piazza San Marco
I-30124 Venice
Tel.: +39 041 2405211
<http://correr.visitmuve.it>

The Island of Corfu

Achilleion Museum
Gastouri Corfu
P.O. 49084 Corfu
Tel.: +30 26610 56245
www.achillion-corfu.gr

Switzerland

Geneva Tourism and Convention Office
Rue du Mont-Blanc 18
CH-1201 Geneva
Tel.: +41 22 9097000
www.geneve-tourisme.ch

Point „I“ Montreux
Place de l'Eurovision
CH-1820 Montreux
Tel.: +41 848 868484
www.montreuxriviera.com

Concept, text and design:
concret Werbeagentur GmbH Augsburg
www.concret.cc
Photographs:
Art History Museum Vienna (Cover), Album
Verlag Wien (5/Cover/small pic.),
Wikipedia/Dorotheum (1/Cover/small pic.)
Regio Augsburg Tourismus GmbH and
partners (21), Martin Kluger/concret (6)
Map: concret Werbeagentur GmbH Augsburg

Regio Augsburg Tourismus GmbH
Touristinformation:
www.concret.cc
Address:
Schießgrabenstraße 14
86150 Augsburg
Telefon 08 21/5 02 07-0
Telefax 08 21/5 02 07-45
tourismus@regio-augsburg.de
www.augsburg-tourismus.de



Sisi's Road

Along the pathways
of the Empress and
Queen Elisabeth

- Bavaria
- Austria
- Hungary
- Italy
- Corfu
- Switzerland



Sisi's Road

A Cultural journey in six European countries

Bavaria

Between Augsburg and the Alps

Austria

From Bad Ischl to Vienna and Laxenburg

Hungary

To Budapest and Gödöllő

Italy & Corfu

South Tirol and the Mediterranean

Switzerland

From Montreux to Geneva on Lake Geneva

The Lady from Wittelsbach

Take a cultural journey in the footsteps of an Empress.

Sisi's Road is a path to glamorous locations in the life of the legendary Habsburg Empress and Queen Elisabeth. The lady from Wittelsbach with the nickname "Sisi" spent her childhood and youth in Bavaria. When she married the Austrian Emperor, Franz Joseph I, she became the Empress of Austria, whose empire included extensive territories in Italy. A few years later she was crowned Queen of Hungary. Elisabeth was celebrated as the most beautiful woman of her time. She suffered under the strict ceremony of the royal court, which she often fled in order to fulfill her passion for athletic horse-back riding and travel.

Sisi's Road is a European cultural route leading to destinations important in the life of the Monarch, Empress Elisabeth. Ideal for tour groups as well as for individual tourists, the route leads to a myriad of worthy destinations. From charming cities and breath-taking landscapes to splendid lakes and spanning to the Mediterranean Sea, travelers are rarely able to visit every location in one trip. Magnificent residences and castle parks, monuments and museums all make this one of "the most beautiful dream roads in the world". The German magazine "HÖRZU" presented the "Sisi-Straße" as one of the twelve outstanding tourism routes world-wide. Travelers on Sisi's Road are led through Bavaria, Austria and Hungary, to northern Italy and to the Greek Island of Corfu. Sisi died in Lake Geneva, Switzerland in 1898. The legend of Sisi lives on, in part due to the Route which bears her name. More at: www.sisi-strasse.info

The royal apartments at the Vienna Castle and the white Sisi statue at Achilleion.



Maximilian Street (left) in Augsburg and the Sisi-statue at Possenhofen train station.



The Imperial Villa in Bad Ischl (left) and Franzensburg Palace at Laxenburg.



Monuments of Elisabeth, the Empress and Queen, can be viewed in Gödöllő (left) and on the Elisabeth Bridge in Budapest.



The Museum Correr in Venice and the Castle Miramare near Trieste.



A monument of Elisabeth in Geneva (left) and in Territet near Montreux.



As a child Sisi stayed in Unterwittelsbach, near the town of Aichach.

Sisi – her childhood and visits in Bavaria

The "Water Castle" in Unterwittelsbach is located near the town of Aichach: From 1838 it was a favorite residence of Sisi's father, the Count Max, in Bavaria. As a child, Elisabeth spent carefree times here. Sisi's brother, Ludwig, and her favorite niece, Marie-Louise, lived only 30 car-minutes away, in Augsburg. A plaque on Maximilian Street in Augsburg is a memorial to Sisi's niece, the Countess Larisch-Wallersee, who played a major role in the "Tagödie von Mayerling" in 1889. Continuing further southward to Starnberger Lake is Possenhofen Castle, which Sisi lovingly named "her Possi". She spent many summers there, swimming or boating to the Rose Island. Sisi often returned to her childhood "paradise" at the lake. The historical train station in Possenhofen houses an Empress Elisabeth Museum with the much photographed Sisi-statue in front of it.



Schönbrunn Castle – summer residence for the emperor.

Elisabeth – the Empress of Austria

It was in Bad Ischl that Sisi first met the Emperor Franz Joseph I. They were engaged in 1853 in what is today the City Museum of Bad Ischl. The Imperial Villa in Bad Ischl became a retreat for Elisabeth and in 1861 the Marble Castle in the Park was built. In Vienna the Imperial Summer Residence, Schönbrunn Castle, attests to the glory of the Austro Hungarian Monarchy. The castle and the castle gardens along with the oldest Zoo in the world, founded in 1752, belong to the Unesco World Heritage Sites. In the Hofburg, which was a residence for the Habsburgs over a period of 700 years, one can view the Sisi Museum in the Imperial Apartments. The Imperial Furniture Collection exhibits the furnishings of the Imperial Family. The Castle Laxenburg was once the showplace for the honeymoon of the imperial couple and the births of two of their children.



Gödöllő was Sisi's favorite Hungarian castle.

Erzsébet – the Queen of Hungary

In 1867 Empress Elisabeth of Austria was able to persuade Hungary to form a political union with Austria. She then became Queen of her beloved Hungary. The Emperor Franz Joseph and the Empress Elisabeth were crowned King and Queen in St. Matthews Church in Budapest. The Elisabeth Monument near the Elisabeth Bridge demonstrates Budapest's enduring admiration for their Queen "Erzsébet". At the coronation, the people of Hungary bequeathed the royal couple the Castle Gödöllő, known as the "Hungarian Versailles". Not far from Castle Gödöllő is the Lázár Horse Riding Park in Domonyvölgy, a reminder of Sisi's love for equestrian sport. The porcelain manufacturer in Herend provided the royal couple with the finest in tableware.



Trauttmansdorff Castle – Sisi's health spa.

Northern Italy and Corfu: Travel and Health Resorts

The Empress often fled to Italy to relax and recuperate in the warmer southern climate. In the resort city of Merano, South-Tirol, visitors encounter a monument to Sisi in the Empress Elisabeth Park. In the eastern part of the city are the gardens of the Castle Trauttmansdorff. The tourism museum located there, "Touriseum", is a reminder of the Empress' love for travel. Nine rooms of the royal apartments in the Museum Correr on St. Mark's Square are a witness to Sisi's abode in Venice. There is also a monument to the Empress Elisabeth at the main train station in Trieste. Her dream palace, Miramare, is close to Trieste on the coast of the Adriatic Sea. This harbor city was Elisabeth's port of choice on the Mediterranean. On the Greek island of Corfu, she had a marble palace built – the Achilleion.



Hotel Beau-Rivage on the shore of Lake Geneva.

In Switzerland – the last days of the Empress

Elisabeth stayed in two hotels in Montreux on Lake Geneva. In Territet, which Sisi visited 4 times, a monument was erected in her honor in 1902. After her last stay in Montreux, the Empress travelled by boat across the Lake to Geneva. After one night in the Hotel Beau-Rivage, an anarchist stabbed her on her way back to the boat. On September 10th, 1898, in her 61st year of life, Elisabeth succumbed to her injuries. There are still some of her personal belongings on display in the hotel. On the lake shore a bronze plaque and a Sisi-statue remind visitors of the assassination. In the stained glass windows of the Basilica Notre-Dame, the image of Saint Elisabeth bears the facial features of the Empress of Austria and Queen of Hungary.